

# Downtoearth

**GD955-7 mining  
grader lands in  
Australia**

#builtfromthebladeup

**Maximising your quarry machinery investment**

**Australian Apprenticeships Employer Award -  
Gold Recipient**

**myFleet - consolidating your machine  
data into a single platform**



1300 566 287 | [komatsu.com.au](http://komatsu.com.au)

**KOMATSU**

Creating value together





**We're here  
to support *you*.**

Quality, reliability, insights and support.  
Partnering to create the solutions you need.

1300 566 287 | [komatsu.com.au](http://komatsu.com.au)

**KOMATSU**  
Creating value together



## Comments

Welcome to the latest issue of Down to Earth.

Something I am really proud of as the leader of Komatsu in this region is our investment in people, both inside and outside the business. Equipping people with skills, knowledge, support and opportunity is not only what drives our business forward, it's what drives our industry.

Komatsu has been recognised for its commitment to training and development by winning the prestigious Australian Apprenticeships Employer Award at the 2023 Australian Training Awards and while it's always great to bring home a trophy, what I am most focussed on is the programs, and the outcomes, that sit behind them.

In June, we celebrated a significant milestone with the launch of myFleet—a comprehensive, no-cost solution designed to streamline heavy equipment fleet management. This platform consolidates machine data into a single, user-friendly interface, simplifying operations and ensuring optimal efficiency.

Furthermore, we are proud to announce that the first mining grader, the GD955-7, landed in Australia. This new mining grader is a testament to our commitment to bringing cutting-edge technology to our operations, setting new standards for efficiency and performance.

Our ongoing partnership with the Clontarf Foundation remains a source of pride for us. Since our official partnership in 2019, we've actively contributed to the foundation's mission, focusing on improving the education, discipline, life skills, self-esteem, and employment prospects of young Aboriginal and Torres Strait Islander men.

In the spirit of the holiday season, I extend my appreciation for the trust you've placed in us. Your partnership is the cornerstone of our achievements, and as we look toward the future.

As we celebrate the successes of the past year, let's also embrace the opportunities that lie ahead. Together, we can continue to redefine industry standards, foster innovation, and create lasting value for you, our customers and stakeholders.

Wishing you a festive holiday season and a prosperous New Year.

Warm regards,

Sean Taylor  
CEO & Managing Director

## Contents

### News

Komatsu wins gold at Australian Training Awards	4
An electrifying journey	5
Komatsu Chairman Tetsuji Ohashi visits Australia	6

### Products and services

First look at WE1850-3 for Australian customers	6
GD955-7 grader lands in Australia	8-9
Maximising your quarry machinery investment	10
Get to know Komatsu's Smart Construction offerings	11
Introducing myFleet - consolidates your machine data into a single platform	12

### Customer stories

3D Machine Guidance: a gamechanger for Victorian based contractor	13
Digging deep for a good cause	14
LB Civil making an impact in infrastructure	15
Batchfire fires up new PC4000	16
Remote support key for Koolan Island's transition to Komatsu	17

### Careers

Komatsu Training Academy	18
--------------------------	----

### Community

Collaboration a key focus at our inaugural Supplier Roundtable	19
Our 2023 Live Your Dream participants pay it forward	20
Supporting the Clontarf Foundation	21

### General

Komatsu promotional merchandise	22
Komatsu Kids' Corner	23

#### Contributors

##### Editor

Alison Davey and Belinda Zaidan  
Komatsu Australia

##### Copywriters

Hardman Communications

##### Graphic Design

Joanna Sullivan

##### Printed by

Snap Printing-Wetherill Park

#### Contact details

Komatsu Australia Pty Ltd.  
50-60 Fairfield Street,  
Fairfield East NSW 2165 Australia  
Web AUS. komatsu.com.au  
Web NZ. komatsu.co.nz



Printed on Maine Recycled - Gloss  
Printed in Australia

© Komatsu Australia Pty Ltd  
Down to Earth Magazine is a  
Komatsu Australia Pty Ltd publication.



## Komatsu wins gold at Australian Training Awards

Komatsu Australia has been recognised for our commitment to training and development by winning the prestigious Australian Apprenticeships Employer Award at the 2023 Australian Training Awards.

The Australian Apprenticeships Employer Award recognises employers who have made innovative improvements in training which provide beneficial outcomes for their apprentices and to their local community.

According to Matthew Tosolini, National RTO & Technical Capability Manager, this award win is a testament to Komatsu's dedication to nurturing talent and providing apprentices with a supportive learning environment.

"We have a strong focus at Komatsu to actively engage in the development of our workforce, whether that's through our comprehensive apprenticeship programs, strong industry partnerships, or supportive workplace culture, it's what sets us apart as a leader in the field.

"We want our apprentices to be continuously learning and enhancing their skills and knowledge, and our training ensures they will be equipped with the necessary expertise to excel in their roles," Matthew says.

Our apprenticeship program offers a comprehensive blend of on-the-job training and classroom instruction. This approach ensures that apprentices gain practical experience while also acquiring theoretical knowledge.

"We also ensure we foster strong relationships with key educational institutions and industry bodies, helping us to gain access to cutting-edge training resources and stay ahead of any industry trends or methods that might be used in the real world," Matthew says.

"As labour shortages continue to be top of mind for our industry, we are immensely proud to contribute to the development of the next generation of skilled professionals, and be recognised at such a high level for our training efforts.

"This achievement would not have been possible without the incredible effort of everyone at Komatsu. Thank you to our apprentices, staff, and all those who support our mission to promote excellence in vocational education and training."

*Pictured (left to right): Paul Clancy, Kieron Hinsley, Matt Buttigieg, Kirstyn Clarke, Janine Gurney, Liam Riley, Matt Tosolini, Tim Freestone, Brendan Coad from Komatsu.*



*Pictured below: The Hon Brendan O'Connor MP, Minister for Skills and Training presenting the 2023 Australian Training Awards.*







## An electrifying journey

Locally and globally, Komatsu has been pioneering electrification adoption for over 70 years. With deep roots in delivering cutting edge equipment and technology for the construction and mining industries, our approach is underpinned by a desire to create a thriving and sustainable future for our customers and industry.

Charles Wheeldon, General Manager, Construction & Utility says our electrification journey dates back to the 1950s when our first diesel electric wheel loader was launched.

"Innovating in this space is in our DNA, and as we look to the future, we're excited to keep bringing new technology, and new machines to our customers that will work smarter and harder, while not impacting productivity or profitability," Charles says.

### Hybrids proving a popular choice

In 2008, we introduced the world's first hybrid hydraulic excavator in response to climbing fuel prices at the time. The 20-tonne hybrid excavator was also our first commercial scale solution, marking the beginning of extensive growth in our electrification venture. Charles says appetite is still strong for hybrid machinery on Australian worksites, with around 200 now operating in our region, and over 5,000 units globally.

"We're seeing a lot of interest from our construction customers, especially those working on major Tier 1 projects, looking to invest in hybrids for their fleets. The Komatsu hybrids are highly productive and reliable machines that also help our customers to align with ESG requirements contractually on site.

"These units perform on par with our conventional excavators, with similar high production outputs and power, while saving anywhere from 20% - 40% on fuel consumption depending on the application," Charles says.

### A step up in our electric offering

After a successful overseas launch of our three-tonne PC30 fully electric mini excavator and 20-tonne PC210 electric hydraulic excavator prototypes at Bauma last year, we're gearing up for a big year in 2024 as we look to launch these machines on Australian shores.

"These prototypes are a great indicator of where we're taking electrification and when fully commercially launched, we're expecting to see some great uptake with our customers adding them to fleets right across the country," Charles says.

Electric machines are quieter, producing less noise and vibration. This means the machines can continue to operate on noise restricted sites and operators are more comfortable, resulting in less impact on the body and lower fatigue.

"There's also a huge benefit in the reduced maintenance requirements and operating cost of electric machines. Electric components require little to no regular maintenance, and fewer moving parts and fluids result in significant maintenance cost and time savings," Charles says.

"There's a lot happening in the design areas of the business, and customers can expect more electric machines and technologies to be released in the coming years."

Along with our construction machinery, you'll see advancements in our mining technology as we look to support that sector towards a net-zero future.

"At a time when we're seeing skills and resources shortages, and pressure to comply with ESG guidelines, the electrified machines in our development pipeline have never been more important."





## Komatsu Chairman Tetsuji Ohashi visits Australia

In October, Komatsu Australia hosted our Chairman of the Board, Tetsuji Ohashi, as he embarked on a quick tour of our east coast facilities, signifying the importance of the Australian market to our global counterparts.

Chairman Ohashi-san started his tour at our Head Office in Sydney, before heading to our Komatsu Mining facility in Moss Vale for a visit and tour.

Following that, Chairman Ohashi-san visited Holcim's Lynwood Quarry in Marulan, near Goulburn. During his visit, Chairman Ohashi-san was provided with an overview of their operations, as well as a site tour, and Q&A with key Holcim executives.

For the final leg of his Australian tour, Chairman Ohashi-san flew to Brisbane to visit our Wacol branch. On arrival, the Chairman met the Mine Site Technologies (MST) and the Mining Technology Solutions teams. He then participated in a tour of the facility, where the Chairman was able to visit our Innovation Hub. Inside the Innovation Hub, he saw firsthand the range of interactive exhibits that demonstrate the latest technologies in mining, quarrying and construction equipment and solutions.

We thank Chairman Ohashi-san for taking the time out of his schedule to see our Australian team, learn about our market and meet with our valued customers.

*Pictured (left to right): Mark Standing, Craig Summerfield, Chairman Ohashi-san, Aaron Kumar, Tomoshi Kitsuya, Kazuya Noburu and Mel Wickham from Komatsu.*



## First look at WE1850-3 for Australian customers

Demand for our WE1850-3 wheel loader is so high that two thirds of our factory's 2024 production slots have been allocated to Australia, before the first machine even started work on Australian soil, according to National Product Manager for Mining, Mark Petersen.

The first machine in Australia has gone into Queensland's Bowen Basin. Before it even entered a mine site, more customers were queuing up to buy. Mark says another six sales have already been made, with more lined up behind it.

"Interest is incredible," Mark says. "Customer conversations are very much around carbon reduction as the main driver in the decision-making process, but the WE1850-3 also offers great versatility, with some customers planning to use it as a frontline production machine in place of a hydraulic excavator, for example," he says.

In addition to being a frontline production machine, with outstanding mobility and travel speed the loader is suited to tasks from ROM operations, keeping the pit floor clean and level without support equipment, to berm maintenance, road repair and cutting ramps.

### Productivity up, costs and carbon down

The WE1850-3 utilises SR Hybrid Drive in place of mechanical drive, resulting in significantly lower fuel consumption compared to equivalent mechanical drive systems.

The SR Hybrid Drive system is fully regenerative so during braking electrical motors feed power back into the electrical system. The model also features a Kinetic Energy Storage System (KESS) that works in concert with the SR Hybrid Drive to store significant power captured from braking so it can supplement peak power demand. The result is fast cycle times without a commensurate increase in fuel usage.

"Compared to an equivalent loader, the WE1850-3 can reduce fuel consumption and CO2 emissions by up to 35%," Mark says.

"There's a lot of excitement around this new model and we expect demand to remain strong."





# Smart Construction 3D Machine Guidance



*An easy and affordable  
way to retrofit 3D guidance and  
payload monitoring.*



Scan to  
learn more





## GD955-7 grader lands in Australia

The highly anticipated Komatsu GD955-7 grader made its Australian debut in Mackay in September, followed by a roadshow across the country where local mining customers got a first look.

The GD955-7 is built specifically for mining operations, with a big focus on productivity thanks to its blade up design allowing for more efficient ground penetration.

Michael Hall, National Mining Product Manager, says the high spec grader has been hotly anticipated by customers for some time.

"The GD955-7 is a ground-up designed mining grader. It can grade 33% more area per hour than the previous model, with a standard 5.5m blade, or an optional 6.1m blade width for even more productivity. It also has the highest blade downforce in class and the highest engine power in class. It's a durable machine designed for high-power grading.

"With large haul trucks on mining sites, graders need to be larger and be more productive to support them. The GD955 is well matched to larger haul trucks anywhere from 90 to over 240 tonnes, making it a great addition to mining fleets," Michael says.

The GD955 comes standard with our 360° camera system, KomVision, which houses a 5-camera system to provide a view around the vehicle using the KomVision monitor, with an additional rear-view monitor for reversing and ripping operation.

"KomVision increases visibility for operators so they can get a full view of activity around the grader. The monitor informs them if another machine is approaching or in their line of movement, a great safety feature for busy mine sites," Michael says.

"The GD955-7 is also 50% heavier than the previous model, meaning it can more easily grade hard-packed road surfaces and take on more demanding jobs.

A number of customers had the opportunity to visit our Ibaraki Plant in Japan earlier this year to see where the grader was manufactured and get a sneak peek before it landed in Australia. "We had really good feedback from the customers who joined us, and plan to start delivering this new model to customers come December and into the new year," Michael says.

To find out more about Komatsu GD955-7 mining grader scan the QR code

[#builtfromthebladeup](#)











## Maximising your Quarry Machinery Investment. Enjoy extended powertrain warranty of 10 years / 20,000hrs.

In the demanding world of quarry operations, downtime can be a costly setback for any business. That's why we, at Komatsu, are taking our commitment to the next level with an extended warranty program designed to keep your operations running smoothly.

We're proud of our machines, built to endure the harshest conditions, and now, we're backing that promise with an extended powertrain warranty. Selected models, including the WA500, WA600, HD405 and HD605, can now enjoy a warranty extension from 3 years / 6,000hrs to an impressive 10 years / 20,000hrs.

To qualify for this offer, all you need to do is keep your machine serviced by us from the moment of delivery. This includes utilising our service options at every OEM recommended service interval, along with completing our Preventative Maintenance Clinics. The best part? There are no additional fees or increased costs for parts or services. You only pay for routine services and consumed parts.

What sets us apart is the flexibility we offer. While we encourage you to leverage our expertise for machine maintenance, we also provide you the freedom to opt-out at any time. Plus, at the time of purchase, we can provide you with an agreed minimum trade-back value for your machine, ensuring that your investment continues to work for you.

But the benefits don't stop there. We understand that maintenance is a critical part of keeping your operations efficient. That's why we provide a range of maintenance options tailored to your needs:

### Fixed Price Service Solution

Our Fixed Price Servicing Solution covers all your maintenance needs, with additional components included in the standard rate. This includes a KOWA (Komatsu Oil Wear Analysis) sample and a comprehensive condition report, which are all accessible via the myFleet app. With a Fixed Price Service Solution, you know the cost upfront, giving you peace of mind.

### Service By the Hour

Outsource your maintenance requirements and simplify your asset management with our Service By The Hour option. This offers a fixed cost per hour to maintain your equipment, with agreements ranging from one year to the whole life of your equipment.

Preventative Maintenance Clinics, scheduled every 2000hrs, are an essential part of our maintenance program. These clinics include a thorough visual inspection, checks and measurements on critical components, and a full machine condition report. This proactive approach ensures minor component replacements are addressed at once, reducing downtime.

For those looking to proactively monitor the health of their equipment, our Condition Monitoring Services (CMS) provide regular analysis of lubricants and fluids used in key components. KOWA (Komatsu Oil Wear Analysis) is part of this service, covering the analysis of various oils and lubricants. By taking samples every 500hrs and promptly responding to any issues, you can prevent premature component failure and extend the life of your equipment.

At 10,000 hours, a minor mid-life rebuild becomes crucial to maintain optimum fuel consumption, performance, and reliability. We offer quality workmanship and genuine parts to ensure your machine performs at its best.

And in the rare event that you need support, our 24/7 customer service centre is ready to assist you. Genuine Komatsu Parts fitted by our qualified technicians come with a 24-month or 4,000-hour warranty.

At the 20,000 hour mark, rebuild your machine with one of Komatsu's Gold, Silver or Bronze rebuild scopes and enjoy your machine's second life. Dependent upon your choice, you can also enjoy the benefits of an additional warranty, with the possibility of receiving a further 5 years / 10,000 hours. By partnering with Komatsu, we could provide up to a total of 15 years / 30,000 hours Extended Powertrain Warranty coverage for your asset.

Whilst rebuilding your machine, you can also hire a replacement from Komatsu Rental, providing you the flexibility to maintain your asset and continue to operate your project as normal. Special rates are available to customers who undertake this option as part of the program.

And when it's time to upgrade, our Guaranteed Trade Back program gives you added confidence in your machinery investment.

In partnership with Komatsu, you're not just buying machinery – you're investing in a comprehensive support system designed to maximise your quarry operation's potential. Trust in us, and experience minimal downtime, extended warranties, and a higher return on your machinery investment.





# Get to know our Smart Construction offerings

Our Smart Construction solutions are an innovative suite of products that aim to improve productivity and safety on construction sites for operators.

Two of our leading Smart Construction products are Retrofit Kit (3D Machine Guidance) and intelligent Machine Control (iMC) – both of which offer significant advantages on excavators, depending on the need and application, according to Tony Clear, National Business Development Manager, from Komatsu Australia.

## iMC 2.0 – integration that delivers productivity and efficiency

Komatsu’s iMC system allows operators to work with unparalleled precision, eliminating over-excavation and the need for manual grade checking, resulting in substantial time and cost savings.

“iMC machines allow both highly skilled and novice operators to work far more efficiently due to the semi-auto and auto functions,” Tony says.

“The machine will guide itself to the design and allow the operator to work at maximum speed with the security that the machine will not allow operators to overbreak the design model. iMC has the potential to increase productivity by upwards of 50% depending on the application and adds value from simple flat pad work through to batter work, trench work, and complex design jobs.

“Features like bucket angle hold control and auto-tilt attachment control on excavators eliminate over-excavation and reduce the need for manual grade checking. Also available on dozers, iMC provides, lift layer control and proactive dozing control, allowing operators to take-off or fill in material at optimum layer levels without operator input. These features result in substantial time and cost savings.”

iMC is available on a range of Komatsu’s hydraulic excavators, as well as several dozer models. Tony says the technology on these is a “must-have” for any site, whether using complex design models or simple flat pads.

“GPS is an important part of productivity onsite today, providing huge efficiency gains for smaller operators right through to larger contractors. iMC takes that productivity to another level, but at a typical guidance-only price,” Tony says.

## 3D Machine Guidance (3DMG) – a flexible solution no matter what machine you run

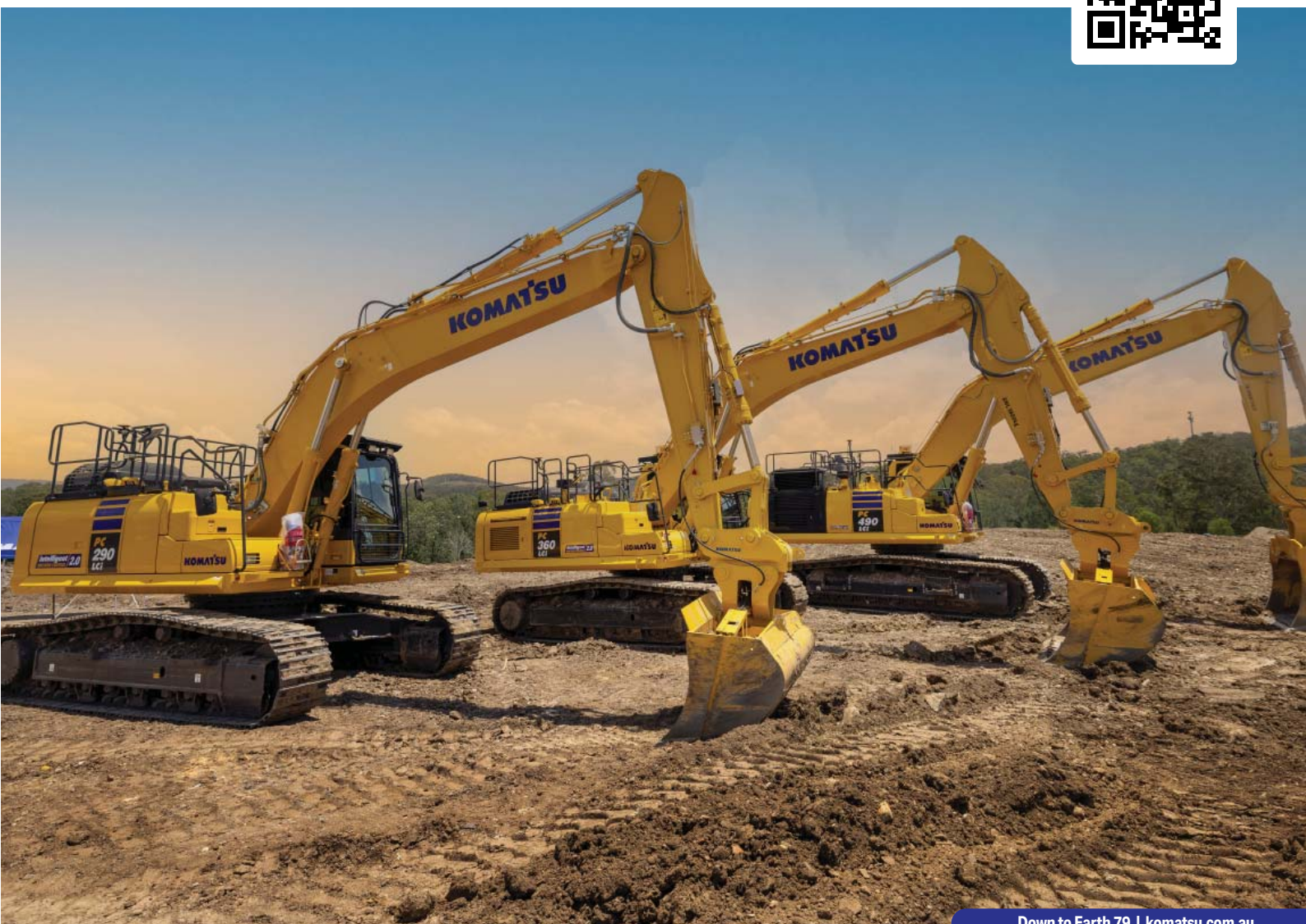
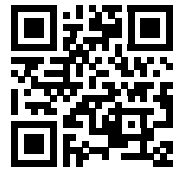
Komatsu’s 3DMG provides customers with a “Komatsu-quality” high-end GPS solution at a price that makes the solution valuable for all applications. It is a guidance-only solution like traditional GPS systems and can be fitted to all Komatsu machines.

“If you’re looking to keep your fleet up to date with the latest solutions, then 3DMG is a cost-effective option, as it allows a fleet owner to take advantage of all the benefits of GPS guidance solutions by installing on existing machines,” Tony says.

3DMG gives operators 3D machine guidance to all models from simple flat surfaces to complex design models, a payload meter that allows a user to max-load trucks for optimum material movement, and even the ability to track as-built progress through the Smart Construction dashboard.

“3DMG ticks a lot of boxes for those looking to upgrade their machine productivity on both existing and new machines. We’ve had a lot of great feedback from operators on not only its ability to increase efficiency and productivity, but also its ease of use and the safety benefits from not having grade checkers within the proximity of equipment.”

To find out more about iMC and Retrofit Kit, and Komatsu’s other Smart Construction solutions scan the QR code.





# Introducing myFleet - consolidating your machine data into a single platform

June this year marked the highly anticipated debut of myFleet, a comprehensive, no cost solution that consolidates your machine data into a single platform, streamlining heavy equipment fleet management and removing the hassle of navigating multiple platforms.

National Manager for ICT and Fleet Management, Steve Williams oversees many of our Information and Communication Technology (ICT) platforms. This includes Komtrax, our remote monitoring system, which is provided at no cost with all new and premium Komatsu used equipment, and he was instrumental in the development of myFleet.

"Since the launch of myFleet, customers have provided overwhelmingly positive feedback, praising the convenience of having a single platform for all their machinery-related information," Steve says. "They've reported improved efficiency, reduced costs, minimised downtime and streamlined operations."

### Comprehensive fleet information at your fingertips

The myFleet platform offers a comprehensive display of fleet information, including service reports and identified defects by our technicians during maintenance events, latest fluid sample results and recommendations, Komtrax location, operating trends and fuel consumption, along with undercarriage inspections that we've completed on your machines.

"Consolidating this information into one platform gives you the ability to achieve a thorough understanding of your fleet's past and future activities.

"For instance, if your machine is due for a 500-hour service, you can easily see in the platform when it is due, giving you ample time to either purchase necessary parts for a self-service or to schedule a service appointment with Komatsu, which can be done through myFleet."

### Minimising downtime

The myFleet system offers a valuable tool for minimising downtime, particularly in the area of planning. It provides visibility into upcoming service schedules, estimated based on your machine's current usage profile, allowing you to align your project planning accordingly.

"Nothing is more frustrating than being in the middle of a job and realising that one of your machines needs servicing, which of course takes that machine out of action and disrupts project delivery," Steve says. "With myFleet, you can forward plan to keep your fleet and operations running smoothly."

To further assist you with planning, myFleet monitors and tracks machine health by collecting data from platforms like Komtrax. This data can alert you to machine abnormalities (error codes), fluid sample results or defects identified during services. By monitoring each machine's status in myFleet, you can proactively address issues before they escalate, reducing potential downtime.

### Benchmarking for fleet success

"Another feature we provide through myFleet is benchmarking," Steve says.

Using this information, you can compare your individual machine's performance and workload against the rest of the Komatsu population, providing you with valuable information to see if there is room for improvement with your fleet, or if they meet industry standards."

With sustainability emerging as a top priority in the industry, many construction companies are now monitoring their carbon emissions, particularly those produced from fuel usage. On the myFleet dashboard, you can also access data not only on fuel usage but also on the carbon emissions generated by each machine.

"The capacity to review and analyse fuel consumption within myFleet holds considerable promise in these emission reduction efforts," Steve says.

### Continuous optimisation

A majority of major telemetry and inspections data from machines are now fed into myFleet, making it a one-stop-shop for owners of Komatsu machines. It offers significant advantages to construction contractors of all sizes, from small, family-owned businesses with one or two machines to large-scale Tier 1 contractors with 100 plus machines in their fleet.

"We are committed to ongoing development of myFleet, continually adding new features and functions to support our customers on their business journey."

Gone are the days of companies having to use multiple platforms to manage their fleet. Our ever-evolving myFleet system is redefining fleet management, pioneering a new era of simplicity and efficiency.



For more information on myFleet scan the QR code





## 3D Machine Guidance: a game changer for Victorian-based contractor

In the decade since brothers Frank and Albert 'Alby' Donohue founded EcoProjects Australia in 2012, they have built their business to be one of the leading water infrastructure contractors in Victoria, utilising Komatsu's Retrofit Kits to give them an advantage on their major projects.

EcoProjects support government water and environmental infrastructure projects throughout Victoria and have a fleet of eight Komatsu excavators and one wheel loader – including two PC228 excavators and one PC138 excavator with 3D Machine Guidance (3DMG) installed. Frank says the 3DMG has changed the way they implement and work on their large-scale projects.

"We purchased our first Komatsu excavator about a year into the business, after a recommendation from a friend, and still have that machine running in our fleet today. The Komatsu machines are fit for purpose for the type of work we do. They can manoeuvre in tight spaces and handle tough infrastructure work. We are constantly putting them to the test, and their productivity, power and fuel consumption is a standout compared to others in our fleet," Frank says.

He says EcoProject's 3DMG models have been especially valuable for their major project work with Melbourne Water.

A retrofit kit delivers ICT functionality to an existing hydraulic excavator, providing 3DMG, payload measurements, and acquiring 3D construction data from site straight into the machine's dashboard, to give operators specific data to help them dig, cut, and move material.

"The 3DMG with GPS has been a game-changer. It has eliminated the need for us to bring a surveyor onsite, and the technology has helped keep everything accurate and precise. We just load the machine with the specs and let it do the rest.

"Our latest project has been transforming Blind Creek and Lewis Park in Wantirna South from an underground concrete drain into a natural waterway and wetland system, as part of Melbourne Water's Reimagining Your Creek program. It has been a big feat, but the 3DMG has made it easier for us to deliver on time and on budget. The accuracy is amazing," Frank says.

"We are looking at adding a Komatsu dozer to the fleet next year and will be ordering additional excavators fitted with 3DMG as we continue to update our fleet. We have always received outstanding backup from the Komatsu sales and service teams, which has been a cornerstone of our relationship from the start."

For more information on Komatsu's 3D Machine Guidance and other Smart Construction solutions, scan the QR code.





## Digging deep for a good cause

Fleck Earthmoving, one of the largest wet hire companies on the east coast of Australia, has seen tremendous growth over the past two years, and now they are giving back and bringing attention to a worthy cause with the latest Komatsu addition to their fleet.

Fleck Earthmoving Group encompasses Fleck Earthmoving as well as NextGen Earthworks, NSW Plant Haulage and Fleck Plant Hire and is based in Box Hill in Sydney's north-west. Fleck Earthmoving's main business is wet hire, with their equipment and operators serving customers from small independent landscapers to larger earthmoving projects.

Michael McFarlane, Group Operations Manager, joined the company two years ago and, in that time, they have grown from a fleet of eight to 72 machines. They recently took delivery of their 20th Komatsu excavator, a PC490, but this one was significant for another reason.

"We wanted to do something meaningful and make a mark, so the idea came to install pink buckets on the PC490 to support breast cancer awareness and the McGrath Foundation. The machine was delivered in October, which is Breast Cancer Awareness Month, so it was really timely.

"SBA Earthmoving Attachments helped with the pink buckets, as part of their #DigitPink campaign, and we also added the signature pink heart from the McGrath Foundation logo to the decals on the excavator. You can't miss the machine, it's a great way to bring attention to such a worthy foundation and we're now looking at other ways we can give back to them as well."

Fleck has another six Komatsu machines on order for next year, with the pink buckets already on standby to do their work in raising awareness.

"We keep going back to Komatsu as the team are great to deal with, and the machines speak for themselves. They're built for the big earthmoving jobs that many of our wet hire customers are asking for, so we know they're always going to be value for money for us.

"At Fleck, we've got a real 'go get 'em attitude towards business. You've got to be hungry for the work and we never say no," Michael says. "We'll go above and beyond to deliver for our customers, which is how we got to where we are today. We can service anywhere across the state, and if a customer asks for a particular machine, we'll make sure we can deliver for them," he says.

That is how their relationship with Komatsu started. When a customer asked for a 50-tonne excavator two years ago, Michael knew that Komatsu had just the type they needed.

"I've worked with Komatsu before, and knew they are reliable, quality machines. The equipment is user friendly, productive, and you know what you're getting with the machine," Michael says.

*Pictured (left to right): Peter Lo Cascio - Komatsu and Michael McFarlane - FleckEarthmoving*







*Pictured (left to right): Rodolfo Saldias Quintas - Komatsu, Sam Lentjes - LB Civil Limited, Matt Bool - LB Civil Limited, David Bainbridge - Komatsu*



## LB Civil making an impact in infrastructure

Christchurch, New Zealand based civil infrastructure and drainage works company LB Civil has only been established since 2019, but in that short time, they've made big strides not only in their successful wastewater and water renewal projects, but in their work to measure and limit their emissions in their Komatsu fleet.

LB Civil started when Sam Lentjes and Matthew Bool joined together to help with the ongoing earthquake clean up, first in Christchurch, then making their way up to the Kaikōura region to assist with railroad renewals and infrastructure upgrades in the area. After purchasing their first Komatsu PC88 excavator, they made the move back to Christchurch in 2020, and started to forge their way as a leading contractor for council wastewater renewal, stormwater renewal and water supply projects. As the workload continued to grow, so did their fleet of Komatsu excavators.

Sam says their Komatsus are built for the type of work they do.

"We have seven Komatsu excavators now, and they're perfect for our work. We currently have a number of large projects underway including a \$10 million wastewater upgrade in Riccarton, a 10-month watermain project installing new water supply to a large portion of Lyttelton's residents. We have also spent the last eight months working on a stormwater upgrade in Lyttelton with Fulton Hogan to upgrade the port boat ramp and surrounding infrastructure ahead of the Sail GP event next year.

"We can be working anywhere from tight urban streets to rocky coastlines, and the machines get the job done. They're powerful, durable and best of all compact. The zero tail-swing means they have a small footprint for those tight streets," Sam says.

"It's why we chose Komatsu from the beginning to work with. Their quality machines, with great back up and support when and where we need it, and the resale value on them holds up as well, too."

A big focus for LB Civil is reducing their emissions on the work they do to become a more sustainable business. A key part of this is how they track and monitor their fleet, using Komatsu's remote monitoring system, Komtrax.

"Each month we prepare a fleet report that is populated with data from Komtrax, such as idle times, active working hours, CO2 emissions, fuel usage and litres per hour burned, which helps us understand our cost versus productivity, and where we might be able to limit our carbon footprint," Sam says.

"It's important we are thinking about the future and what impact our machines and our work is having on the environment. We're living by the mantra 'if you can, you do' – and this is just a small step we as a business can make at setting ourselves up for the future. It also gives us a strong point of difference when going for tenders - not many in our specific field are doing what we're doing in the sustainability space.

"We're celebrating the small but meaningful wins we find, while also creating awareness around carbon reduction not only for us as a company but also as an industry."





## Batchfire fires up new PC4000

A brand-new PC4000 was recently delivered and constructed at Batchfire's Callide Mine, built and tested in just one month ahead of its first start-up, and is now ready to get to work.

Komatsu worked alongside the Callide team to ensure a successful delivery of the PC4000, which was customised for the unique operational requirements of the Callide site and built to withstand harsh Queensland mining conditions.

"This excavator needed to be a tough, high-productivity machine while also offering the highest levels of fuel efficiency and operator safety. This meant various unique requirements, like an oversized 23 m<sup>3</sup> rock bucket" says Scott Harrington, Komatsu Regional Manager - Mining Equipment.

"It was a big feat, but the collaboration between both parties meant a great outcome."

### Successful delivery making an immediate impact

Matthew Scales, Batchfire Resources Manager of Mining & Production, says that the process from start to finish was incident free, smooth and a testament to Komatsu's expertise as a leading mine machinery manufacturer.

"What a lot of people don't realise is mining equipment is so large, in this case 400 tonnes, that much of it has to be transported to site in pieces. The bucket alone on this PC4000 weighs upwards of 25.6 tonnes."

The new excavator will be operating around the clock at the Callide Mine, put to work for more than 400 hours each month and expected to shift five million bank cubic metres of waste each year.

Komatsu joined the Callide Mine team for the first run of the excavator, as it made its maiden voyage from their Boundary Hill East assembly area to the Boundary Hill South pit where it will spend most of its operating life.

### A powerful and smart machine

Operators of the PC4000 at Callide were impressed by its power, with 1875hp available at 1800rpm from a 16-cylinder turbocharged diesel engine.

"The first thing our operators have noticed is that it has really good breakout power compared to other excavators around the same size," Matthew says.

"The cab has a user-friendly layout and visibility as well, which is proving to be a big hit."

This PC4000 is equipped with the latest Mineware Argus 3.0 smart payload monitoring system, Komvision camera and LiDAR safety system, Komtrax Plus remote monitoring data system, and advanced telemetry technology.

Alongside the innovative technology onboard the PC4000, it has also been fitted with various additional sensors to allow Batchfire to utilise the latest MaxMine smart monitoring solution already in use across the entire fleet of trucks and machinery at their Callide Mine.

### Safe, and fuel efficient

The safety benefits of the PC4000 are extensive and include a 45-degree stairway design, three on-board cameras offering 360-degree birds-eye view, penetration-proof safety glass, powerful LED working and service lights and remote monitoring.

Alongside the safety benefits, fuel efficiency is also improved compared with older equipment still widely used by mines around the world. The PC4000 is expected to use 233 litres per hour, down more than 15 per cent on the machine it replaces.

The PC4000 joins a growing fleet of Komatsu mining machinery at Batchfire's Callide Mine, consisting of 18 other units including loaders, dozers, dump trucks, and excavators – so far offering exceptional reliability and reduced fuel use.

In fact, more than 60 per cent of Batchfire's pre strip haul truck fleet is now powered by diesel-electric-drive dump trucks, following a substantial investment in six new Komatsu 930E-5 dump trucks.

The electric-drive trucks offer significant CO<sub>2</sub> emission reductions and increased productivity, while most importantly aligning with Batchfire's commitment to ongoing sustainability.







## Remote support key for Koolan Island's transition to Komatsu

**'Remote support' takes on a whole new meaning when a mine site is located on an island in the Buccaneer Archipelago, 130km north of the Kimberley town of Derby, according to Jason Lambert from Komatsu, which has recently become the single-OEM load & haul partner for Mt Gibson Iron's Koolan Island mine.**

Koolan Island boasts Australia's highest grade hematite ore reserves, averaging over 65% Fe – but getting to it is tricky, with parts and supplies coming by barge from Perth or Broome.

The site converted to an all-Komatsu fleet of 9 x HD1500-8s dump trucks and 2 x PC4000-11s hydraulic excavators to simplify machinery supply and support.

Jason Lambert from Komatsu says Koolan could see the advantages of having their fleet all supplied and serviced by a singular OEM.

"Head-to-head, our HD1500-8 truck offered the Koolan Island site improved performance and productivity over their existing fleet, especially in cycle times, safety, capital price and maintainability. Our trucks deliver improved productivity over the competitor, and overall running costs are lower, meaning lower costs over a longer period of time for the site.

"Along with this, we were able to package our PC4000-11s in the deal, as Koolan saw substantial value in dealing with one OEM for their entire fleet, creating overall site efficiencies," he says.

Jason says the support package developed for Koolan Island had many contingencies to help minimise downtime if issues were to arise.

"We included a full support program to assist the site with change management. This included having one of our product specialists embedded on their site for a year to help with set up, service and support.

"We also organised a parts support bundle onsite which stocked some critical parts they may need. Rather than having to wait for parts to arrive from Perth, the shipping container has a select bundle of parts including

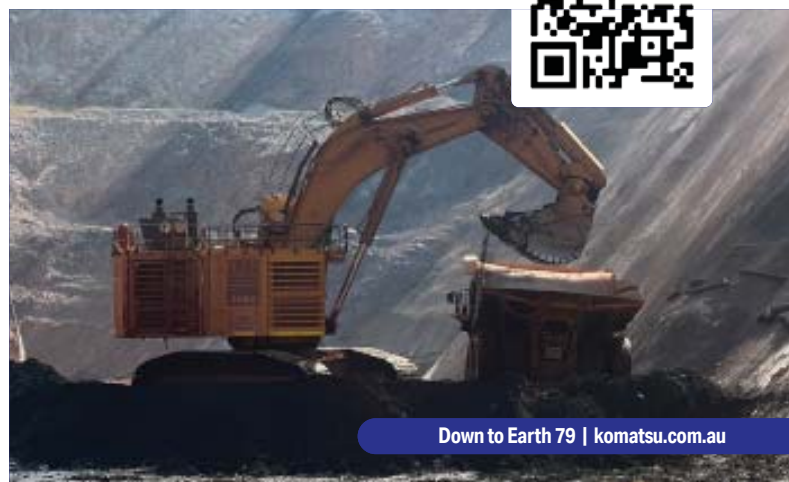
fan belts, hoses, etc to save on downtime should any machine issues arise," Jason says.

Embedded resources are a part of Komatsu's overall Mining Solutions product offering and involves Komatsu placing highly skilled and experienced mining professionals into customers' operations, to ensure their Komatsu mining equipment is performing, productive and profitable.

They work closely with customers to ensure the right equipment is chosen to suit operations, conduct on-site application studies, perform machine performance tests, and carry out studies on payload, GHG emissions, and overall productivity onsite to continuously identify opportunities for site improvement.

"Our Embedded Resources team are experienced professionals with years of mine site knowledge, that are a great addition to our customers, like Koolan, in need of some additional onsite support."

**To find out more about Komatsu Mining Solutions, scan the QR code.**







## Komatsu Training Academy

As a company deeply entrenched in the construction and mining industries, we understand the constant need for up-to-date skills and knowledge. In this fast-paced environment, staying ahead is not just an advantage; it's a necessity. This is where the Komatsu Training Academy (KTA) comes into play, a Registered Training Organisation (RTO) that has been specifically crafted to meet the unique needs of professionals like you.

### A personalised approach to training

What sets KTA apart is our commitment to providing tailored training solutions. Whether you prefer to learn online, on-site, at your workplace, or within our dedicated training facilities, KTA ensures accessibility and flexibility. Our offerings include a mix of accredited courses and modules, as well as purpose-designed training programs for operators, technical staff, and management personnel.

### Learning from industry-experienced trainers

One of the standout features of KTA is our team of specialist, industry-qualified trainers. These professionals bring real-world experience to our training sessions, making the learning process not just theoretical but deeply practical. The competency and skill-based development programs cover everything from leadership and management to operator proficiency and customised technical skills, aligning perfectly with the specific needs of our industry.

### Building holistic skills

KTA's approach to skill development goes beyond the ordinary. Recognising that success in our industries requires a multifaceted skill set, the academy ensures a blend of technical expertise, managerial insight, and operational proficiency. Through hands-on experiences with industry tools and equipment, combined with theoretical knowledge, KTA graduates not only gain a qualification but also a well-rounded preparation for the challenges that define our industry.

### Future-ready capabilities

In an era where technological advancements shape the trajectory of our industry, KTA positions itself as a catalyst for change. By enhancing both management and workforce skills, KTA ensures that we are not only ready for current challenges but are also prepared for the dynamic demands of the future. The courses offered at KTA lay the foundation for sustainable growth and excellence in our industries.

### A variety of courses tailored for you

KTA's diverse course portfolio caters directly to people working in the mining and construction sectors. From foundational programs to advanced technical training, KTA provides a comprehensive educational journey. What's more, the nationally-recognised qualification earned through KTA doesn't just certify your knowledge; it attests to your readiness to face the challenges of our industry.

### Hands-on learning at its best

Integrating practical experiences with theoretical knowledge, KTA ensures that graduates are not just knowledgeable but have also gained proficiency in applying that knowledge. The state-of-the-art training facilities provide an immersive environment where you can engage with the equipment and tools used in the field, bridging the gap between theory and practice.







**"Komatsu already has some of the best in house practices and tools to support a safe workplace, but we now have a greater focus on behavioural change, so we discussed how we can best support this next step"**



## Collaboration a key focus at our inaugural Supplier Roundtable

**As an industry leader, it's important we continuously work together with our supply chain stakeholders, to ensure we deliver best outcomes for customers and the wider industry.**

In November, we hosted our first Supplier Roundtable at our Sydney head office, which brought together senior executives from our valued supply chain partners, and provided an opportunity for us to share perspectives on important topics that can impact each of our organisations.

The roundtable was hosted by our Managing Director, Sean Taylor, and Russell Hodson, our EGM for Supply Chain, who led discussions on safety, workplace diversity and ESG.

"Safety was a critical issue we tackled at the roundtable, led by our GM for Sustainability and Safety, Henrietta Jukes. Komatsu already has some of the best in house practices and tools to support a safe workplace, but we now have a greater focus on behavioural change, so we discussed how we can best support this next step," Sean says.

"Melissa Morrison, our GM of Human Resources then led the discussion on workplace diversity, including how we can all, as industry leaders, best support diverse opinions and roles in our workplaces, and put a greater focus on not only attracting, but retaining women and other diverse talent."

We were joined by executives from Castrol Australia, Atmsu Filtration, Dazza's Steel Fabrication, Dell, DHL Express, Donaldson, Doolan's Heavy Haulage, Schlamm Engineering, Hudson RPO, Pirtek, Salmon Buckets, Team Global Express (formerly Toll), Tecside Group and Telstra.

"At Komatsu, our purpose is creating value together, and our inaugural supplier roundtable was an example of how we are committed to working together with our external supply chain stakeholders to continue to deliver the best value to our customers and the industry," Sean says.

"With each roundtable topic, the group collectively shared initiatives executed in their business, as well as their thoughts on ways we can improve our business operations to better support our employees and our customers. We're looking forward to implementing some of the actions we landed on and seeing some positive results across all our businesses."

Guests also had the opportunity to visit our INSITE centre and walk through our workshop to see how our business operates firsthand.

"We thank all our guests for their insights and commitment and we look forward to shaping a future of collaboration and responsible business practices," Sean says.







## Our 2023 Live Your Dream participants pay it forward

Our Live your Dream program has been running since 2017 and gives Komatsu employees the opportunity to contribute to their local community or wider society. In 2023, the program saw nine employees gifted a \$10,000 grant to support a not-for-profit organisation or charity of their choice.

This year's Dreams gave back to a number of local charities or groups right across the country, from men's mental health in remote Western Australia, to using art and music to power inclusivity for people with Down syndrome in the Illawarra region.

See below a recap on the Dreams completed so far in 2023, and we're looking forward to announcing our next round of Live your Dream recipients for 2024.

### Maronites on Mission – Kristy Gerges

Komatsu Marketing Specialist Kristy Gerges chose Maronites on Mission (M.O.M) for her Live your Dream grant. Maronites on Mission is a group of dedicated volunteers who reach out to marginalised members of society to relieve some of their sufferings and provide some companionship.

As for Kristy's Live Your Dream program, she participated in the M.O.M annual sleepout, in Appin, NSW, to experience homelessness for a night while raising money that goes directly back to M.O.M. On the back of this, she also participated in M.O.M's food van outreach program, which travels from Woolloomooloo to Martin Place, providing food to those in need.

Kristy's group raised a total of \$35,000, which will go back to the charity to assist marginalised members of our society, through schemes like medical assistance, housing support, dental check-ups and food donations.

### Illawarra Music Foundry – Bronte Jewell

Bronte Jewell, a Komatsu Apprentice Technician from our Fairfield branch, has always been a big believer in the power of creative arts to build inclusivity. Bronte chose to direct her \$10,000 prize to the Illawarra Music Foundry (IMF) to support people with Down syndrome.

IMF is a registered non-for-profit organisation, which aims to engage and empower children and young people through musical performance, contributing to a vibrant and creative region.

Bronte has been involved with the IMF for many years and has seen firsthand the incredible transformative power of mentorship and guidance through the power of creative arts.



### Regional Men's Health Initiative – Mick Bartlett

Men's mental health is a challenge that plagues many of our regional and remote communities. Isolation and lack of access to information and support are mounting issues, but they are ones that Mick Bartlett, Komatsu's Service Supervisor at the Tom Price branch in Western Australia, is setting out to address.

Mick has thrown his support behind the Regional Men's Health Initiative, a not-for-profit organisation formed to raise awareness of men's wellbeing and health, servicing regional, rural and remote WA.

Mick's grant will go towards further education programs at the Regional Men's Health Initiative, including one he helps support, the Pilbara Bruthas Poker Run, where a group of locals ride their bikes around the Pilbara, stopping at towns for poker tournaments, all while raising awareness of men's mental health and wellbeing.

### Pirate Ship Foundation – Julie Aplin

Komatsu employee Julie Aplin has seen firsthand the impact childhood brain cancer can have on families. Her son Scotty was diagnosed with a grade 3 brain tumour at the age of 15. He had to undergo two brain surgeries, followed by radiation therapy, and then 12 months of chemotherapy, but now, 13 years later, Scotty is doing well, and Julie wants to give back to those who supported her, Scotty and her family during that difficult time.

Julie chose to direct her \$10,000 prize to The Pirate Ship Foundation, a charity that helps raise vital funds which are directly invested into childhood brain cancer research programs, including the brain tumour research program at WA's Telethon Kids Institute.

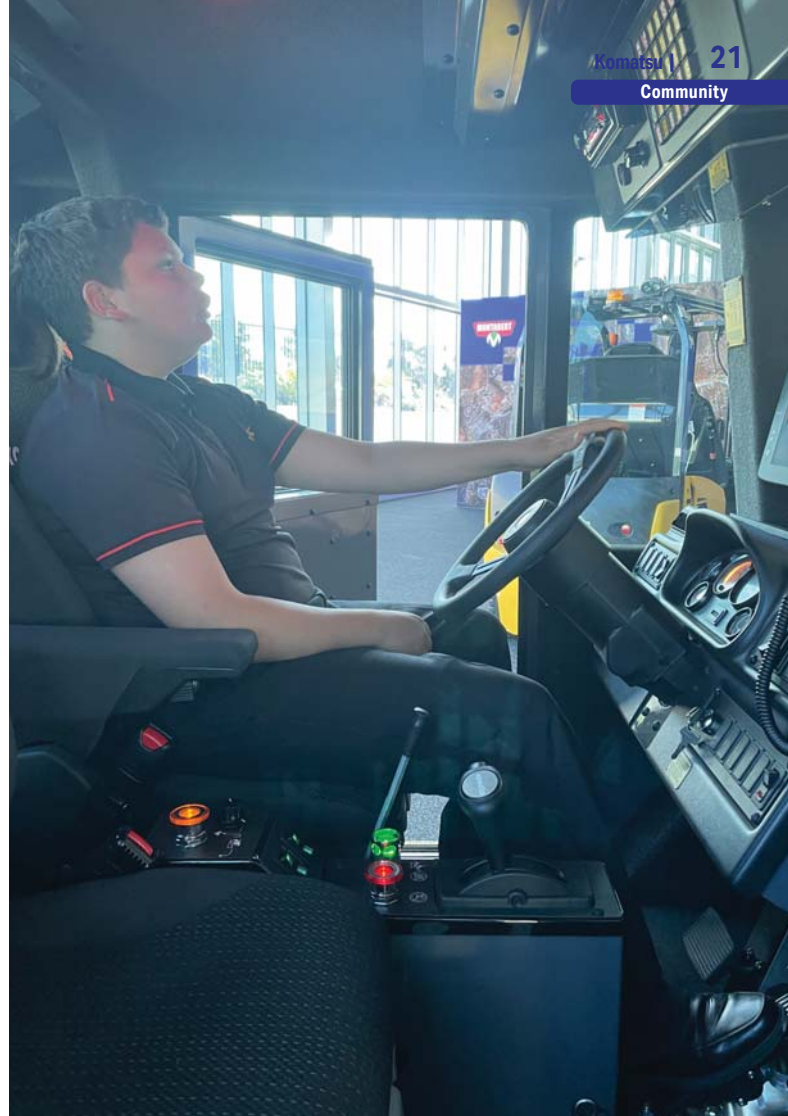
As part of Julie's Dream, she is in the middle of planning a fundraising event for the foundation, which she is hoping to hold in January next year.







# clontarf foundation



## Proud supporters of the Clontarf Foundation

Komatsu has been a proud supporter of the Clontarf Foundation and their community activities for many years, with our official partnership commencing in 2019.

Clontarf's goal is to improve the education, discipline, life skills, self-esteem and employment prospects of young Aboriginal and Torres Strait Islander men and equip them to participate more meaningfully in society. They operate 148 academies across WA, NT, QLD, NSW, VIC and SA, with over 11,500 participants and over 560 dedicated staff members.

Clontarf opened their latest academy in Kurri Kurri in the Hunter region of NSW in August. The academy has been 12 months in the making, built in the old Kurri Kurri museum, and is much needed in the area to help give local Aboriginal and Torres Strait Islander men a place to call their own and achieve their full potential.

National RTO & Technical Capability Manager, Matthew Tosolini attended the event, which was officially opened by The Hon. Meryl Swanson, Federal Member for Patterson, as well as other local dignitaries and residents.

"Our dedication to helping indigenous communities is part of our partnership with the Clontarf Foundation. We provide opportunities for work experience for their indigenous or disadvantaged students, hold mock interviews to prepare their participants for work in the industry, plus provide funding that goes to empowering young people to achieve their potential through Clontarf," Matthew says.

Komatsu team members also organise and participate in morning rugby league training sessions at local schools to help the students build their fitness for the Ross Kelly Cup, an annual competition organised by Clontarf where they get to represent their academy and state.

"We're looking forward to continuing our support of Clontarf Foundation and helping these young men achieve their goals, and hopefully land roles in Komatsu and the wider industry," Matthew says.



# Explore Our Exclusive Merchandise Range!

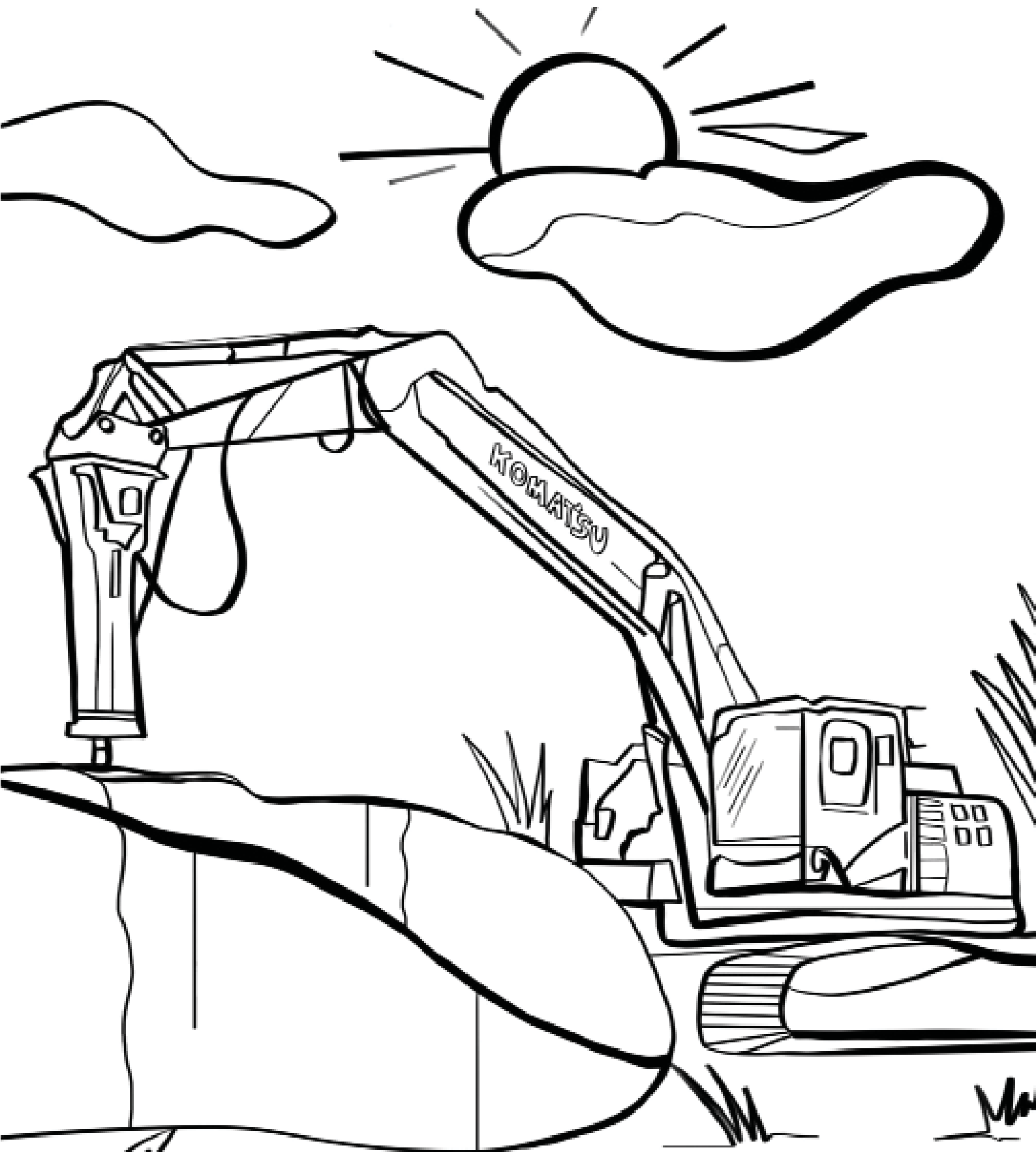
*Show your true colours with our premium merchandise collection*



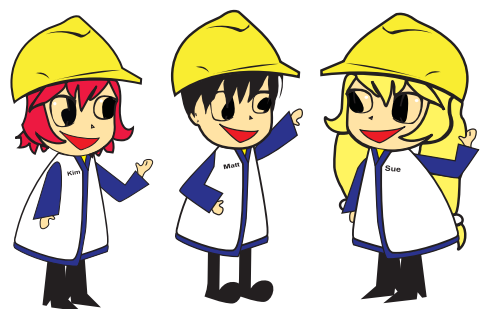
Scan QR code to view the range and purchase  
or visit [www.komatsumerchandise.com.au](http://www.komatsumerchandise.com.au)







Hi Komatsu Kids,  
get ready to unleash your imagination and  
bring colour to Komatsu. Enjoy!





# | My future My career

## Come and join our team at Komatsu

As a leader in mining and construction earthmoving equipment, we have loads of full time and part time job opportunities with great benefits.

From trade roles to data scientists to engineering, sales professionals to operations, warehouse to office and administration, make the smart move!

Visit [komatsuweb.link/find-my-next-job](https://komatsuweb.link/find-my-next-job)



1300 566 287 | [komatsu.com.au](https://komatsu.com.au)

**KOMATSU**  
Creating value together