

# KOMATSU

## PC78UU-10

EPA Tier 4 Final Engine

Australia & New Zealand Specifications

HYDRAULIC EXCAVATOR



PC78UU

### HORSEPOWER

Gross:  
50.7 kW 68.0 HP / 1950 min-1  
Net:  
48.8 kW 65.5 HP / 1950 min-1

### OPERATING WEIGHT

7,960 kg

### BUCKET CAPACITY

0.095 - 0.28 m<sup>3</sup>

# WALK-AROUND

Introducing the environmentally friendly next generation compact hydraulic excavator.

Compliant with EPA Tier 4 Final emissions regulations.

## ECOLOGY & ECONOMY

- EPA Tier 4 Final emission regulations – compliant engine **NEW**
- 5% reduction in fuel consumption (compared to Komatsu's previous models) **NEW**
- Selectable 6 working modes **NEW**
- Low Noise Design

## SAFETY

- Suitable for Narrow working conditions with a Short Swing
- Cab protection design compliant with (ISO 3471) and OPG 2 top guard (ISO 10262) standards
- Lock lever and lock lever auto lock function

## WORKABILITY

- Increased precision and efficiency with the offset boom
- Increase of 3% for efficiency through work mode
- Max Drawbar Pull increased by 2%

## INFORMATION & COMMUNICATION TECHNOLOGY (ICT)

- Multi – function monitor for displaying information **NEW**
- High resolution 3.5" Liquid Crystal Display (LCD) colour monitor
- KOMTRAX Level 5





**HORSEPOWER**

Gross:  
50.7 kW 68.0 HP / 1950 min-1  
Net:  
48.8 kW 65.5 HP / 1950 min-1

**OPERATING WEIGHT**

7,960 kg

**BUCKET CAPACITY**

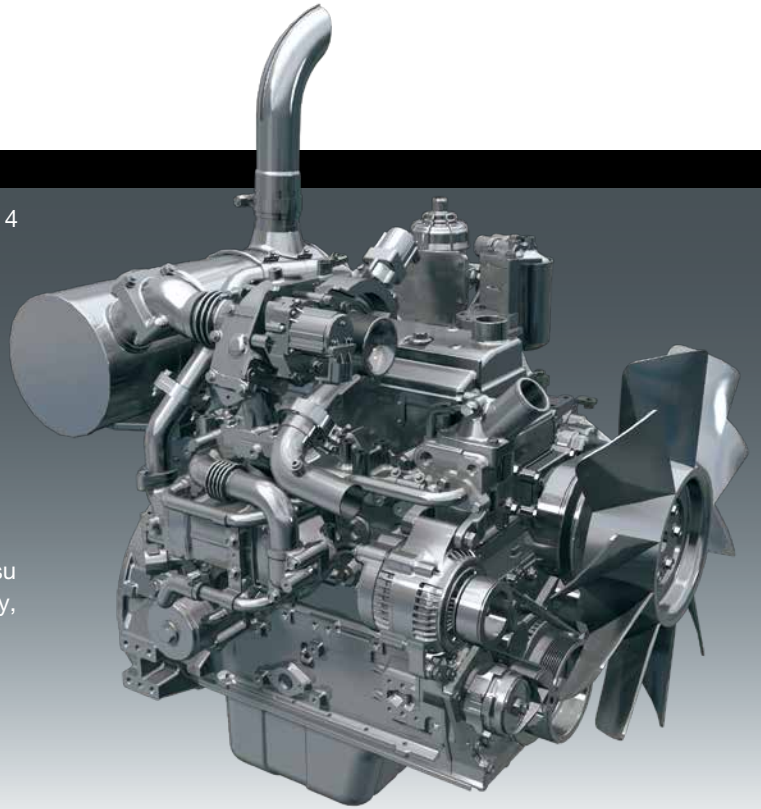
0.095 - 0.28 m<sup>3</sup>



# ECOLOGY & ECONOMY

## ENVIRONMENT-FRIENDLY ENGINE

The Komatsu SAA4D95LE-6 engine is EPA Tier 4 Final and EU Stage 3B emissions certified and provides exceptional performance while reducing fuel consumption. Based on Komatsu proprietary technologies developed over many years, this new diesel engine reduces exhaust gas particulate matter (PM) by more than 90% and nitrogen oxides (NOx) by more than 15% when compared to Tier 4 Interim levels. Through the in-house development and production of engines, electronics, and hydraulic components, Komatsu has achieved great advancements in technology, providing high levels of performance and efficiency in virtually all applications.



## Efficient Hydraulic System

The PC78UU-10 uses a Closed-centre Load Sensing System (CLSS) that improves fuel efficiency and provides quick response to the operator's demands.

The PC78UU-10 also introduces new technology to enhance the engine and hydraulic pump control. This total control system matches the engine and hydraulics at the most efficient point under any load condition. There have also been improvements in the main valve and hydraulic circuit to reduce hydraulic loss, resulting in higher efficiency and lower fuel consumption.

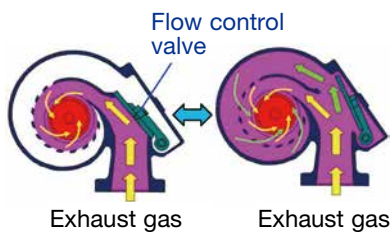
Reduced up to **5%** fuel consumption

vs PC88MR-8  
Based on typical work pattern collected via KOMTRAX. The fuel consumption reduction may be less than the above value during actual work, depending on the contents of the work.



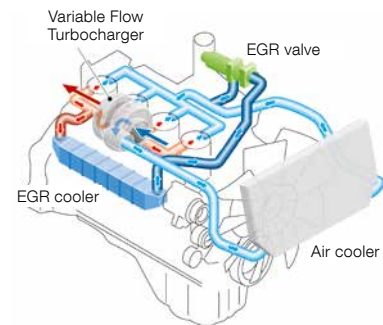
### Komatsu's New Engine Technology Includes Variable Flow Turbocharger (VFT)

A newly designed variable flow turbocharger features simple and reliable technology that varies the intake air flow. Exhaust turbine wheel speed is controlled by flow control valve and it enables to deliver optimum air quantity to the engine combustion chamber under all speed and load conditions. The result is cleaner exhaust gas while maintaining power and performance.



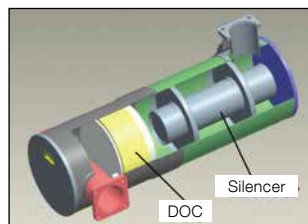
### Cooled Exhaust Gas Recirculation (EGR)

Cooled EGR, a technology well-proven in existing Komatsu engines, reduces NOx emissions. These components ensure reliable performance during the demanding work conditions of construction equipment.



### Komatsu Diesel Oxidation Catalyst (KDOC)

Komatsu has designed and developed a simple and high efficiency diesel oxidation catalyst. This system enables to eliminate the need of the PM regeneration and to simplify the engine control system. High performance exhaust noise silencer is also integrated and it contributes the engine noise reduction.



### Redesigned Combustion Chamber

The combustion chamber located at the top of the engine piston has a new shape designed to improve combustion and further reduce NOx, PM, fuel consumption, and noise levels.

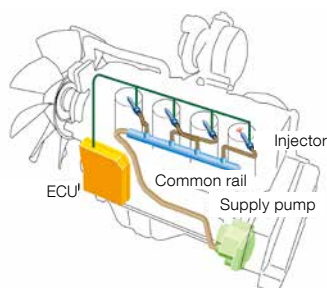
### Komatsu Closed Crankcase Ventilation (KCCV)

Crankcase emissions (blowby gas) are passed through a CCV filter. The CCV filter traps oil mist which is returned back to the crankcase while the gas, which is almost oil mist free, is fed back to the air intake.



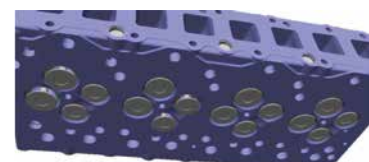
### Heavy Duty High Pressure Common Rail (HPCR) Fuel Injection System

Computer controlled heavy duty HPCR system delivers a precise quantity of pressurised fuel into the engine combustion chamber using multiple injections to achieve complete fuel burn and reduce exhaust emissions. Fuel injector reliability has been improved through the use of ultra-hard wear resistant materials such as diamond-like carbon.



### Newly Designed 16 Valve Cylinder Head

Komatsu has designed and developed a new 16 valve cylinder head. It enables to reduce exhaust emissions by maximised air intake quantity and optimised fuel combustion.



### Electronically Controlled Common Rail Type Engine

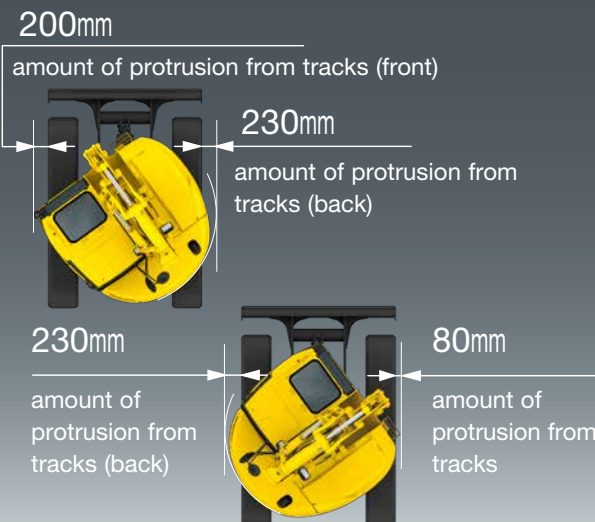
- Multi-staged injection
- Low Noise Design
- Optimal arrangement of sound absorbing materials
- Partition between the cab and engine room
- Airtight valve room

# SAFETY

## SHORT SWING RADIUS

### ULTRA SHORT SWING SUPERIOR IN SAFETY AND NARROW WORKABILITY

PC78UU – 10 design uses a Tight Tail concept for both ends. This enables the machine to rotate fast, easy and confident. There is less to worry about in tight space conditions because there is little protrusion from either the tail end of the front end.



### Locking Lever

Engine can only be started in the unlocked position.



### Locking Lever automatic lock function **NEW**

When the operator unintentionally releases the lock lever with the operating lever or pedal activated, caution is displayed on the monitor and the motion of the car body is locked.



### ID Key to reduce machine theft risk **NEW**

It is not possible to start the engine without the ID key. The ID key is built into the IC chip as the start key, where you can only start the machine after inputting the ID key. If the registered ID key was stolen or lost, you can erase the ID key.

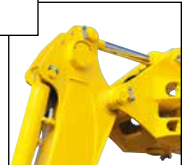


### Potentiometer

Prevents damage to sensor parts such as interference prevention system.



Offset Potentiometer



Arm Potentiometer

### Built in working machine hydraulic hose

Guard the hydraulic hose from touching obstacles.





**ROPS CAB STRUCTURE**

**ROPS CAB PROTECTION**

Equipped with a ROPS cab for driver protection structure if the hydraulic excavator falls. It has high impact absorption capability, outstanding durability and impact resistance. For falling objects, it complies with OPG Top Guard level 2 and head guard standard of industrial safety and health laws.



**Rear monitoring system**

The rear area can be clearly seen on the high definition LCD monitor



**Other safety equipment**

▪ **Secondary engine stop switch**

In preparation for an emergency, an engine stop switch was equipped at the bottom of the seat



▪ **Set belt Caution indicator**

Lights up when seat belt is not fastened.



- Retractable seat belt
- Emergency escape hammer
- Reinforced tempered glass

▪ **Large reflector** NEW



- Mirror for view of left rear area
- Travel alarm
- Thermal Guard



▪ **Fan Guard**



▪ **Oil Scattering prevention cover**



# WORKABILITY

## OFFSET BOOM

### OFFSET BOOM TO INCREASE THE ACCURACY AND EFFICIENCY OF SIDE EXCAVATION WORK

Equipped with an offset boom with maximum boom range of 1050mm on both sides. Now it is possible to accurately and efficiently perform the side excavation work in narrow areas and walls together with the rear ultra-small turning.

#### Outside Track Excavation with 600mm Bucket

Left side **410mm**

Right side **120mm**

#### Powerful & Smooth Work

With the evolved total peak control, we realised an increase in work while suppressing fuel consumption.

#### Workload

Increased by **3%**

Vs PC78UU-8 Based on typical work pattern collected via KOMTRAX.

#### Excellent Driving Performance

Refined the strong traction that is popular with PC78UU, the maximum towing power has been further increased by 2%. With high hill climbing ability and steering performance, it demonstrates excellent driving performance.

#### Maximum traction

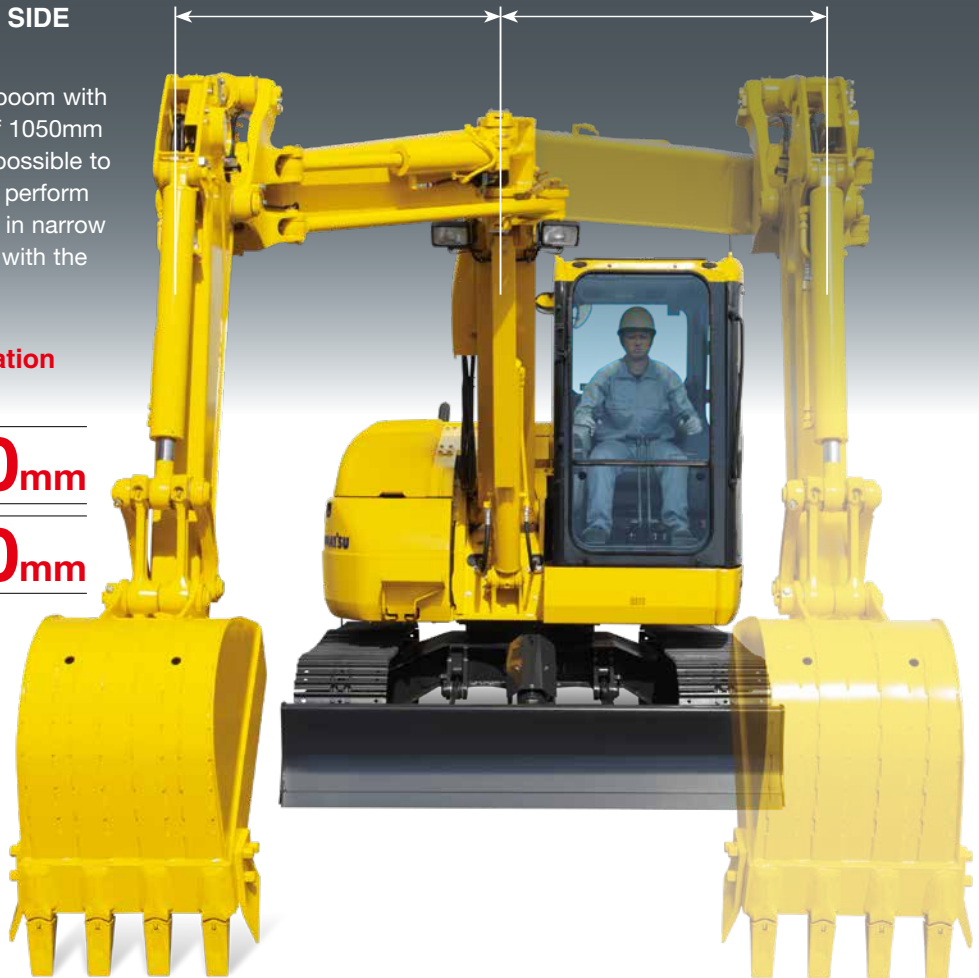
Increased by **2%**

Vs PC78UU-8 Based on typical work pattern collected via KOMTRAX.

#### Equipped with a swing return prevention valve

A swivel motor with a swinging return restraining valve with smooth turning stop as standard build. It is easy to position the working machine and it helps prevent the load of the bucket from spilling out.

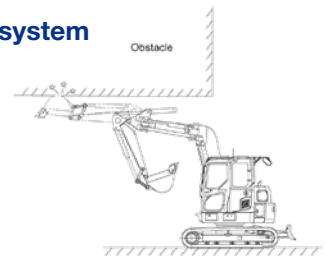
Right Maximum boom offset **1050mm**      Left Maximum boom offset **1050mm**



#### UU's unique advanced system

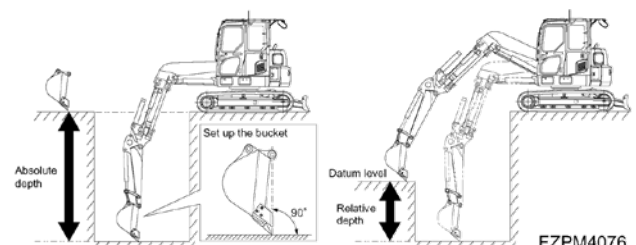
##### Height limiter

An adjustable boom height limiter can be set prior to operation.



##### Digital depth display

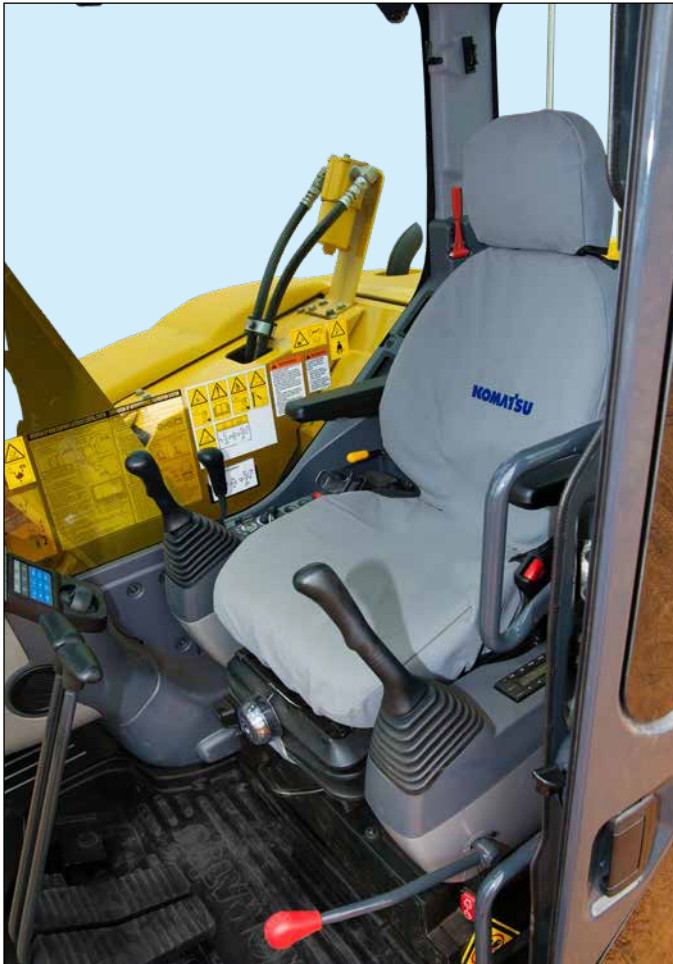
Ditching, trenching, or digging is even more efficient with this automatic depth measurement system



FZPM4076



# COMFORT



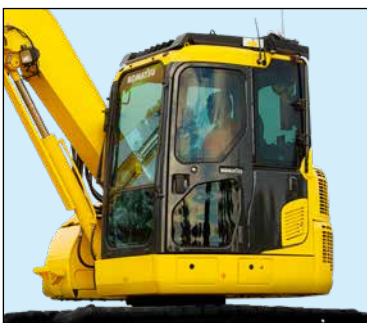
## Large Cab

Large cab provides ample operation space. The cab has a wide doorway for easy access.



## Sliding Convex Door

The sliding convex door facilitates easy entrance and exit in confined areas.



## Auxiliary Input (MP3 Jack)

By connecting an auxiliary device such as an MP3 player to the auxiliary input, the operator can hear the sound through the speakers installed in the cab.



## 2 X 12 V Power Outlets

The converter is increased in capacity and two power supply sockets are installed to supply electric power for various use.



## Low Cab Noise

Cab is highly rigid and has excellent sound absorption ability. Through improvement of noise source reduction and use of low noise engine, hydraulic equipment, and air conditioner allows this machine to generate a low level of noise.

## Automatic Air Conditioner

The automatic air conditioner allows the operator to easily and precisely set the cab temperature using the large LCD color monitor panel. The bi-level control function improves air flow and keeps the inside of the cab comfortable throughout the year.

# INFORMATION & COMMUNICATION TECHNOLOGY



Basic operation switches

Function switches

Air conditioner operation switches

## Large Multi-lingual High Resolution LCD Monitor

A large user-friendly high resolution LCD colour monitor enables safe, accurate and smooth work. Visibility and resolution are further improved compared with current 7-inch large TFT LCD. Simple and easy to operate switches. Function keys facilitate multi-function operations. Displays information and datas in 25 languages to globally support operators around the world.

### Indicators

- |                                  |                                   |
|----------------------------------|-----------------------------------|
| 1 Auto-decelerator               | 5 Hydraulic oil temperature gauge |
| 2 Working mode                   | 6 Fuel gauge                      |
| 3 Travel speed                   | 7 ECO-gauge                       |
| 4 Engine water temperature gauge | 8 Fuel consumption gauge          |
|                                  | 9 Function switches menu          |

### Basic operation switches

- |                         |                     |
|-------------------------|---------------------|
| 1 Auto-decelerator      | 4 Buzzer cancel     |
| 2 Working mode selector | 5 Wiper             |
| 3 Traveling selector    | 6 Windshield washer |

## Supports Efficiency Improvement

The main screen displays recommendations for better energy-saving operations as needed. The operator can use the ECO guidance menu to check the operation records, ECO guidance records, average fuel consumption logs, etc.



ECO guidance



ECO guidance menu

## Operator Identification Function

An operator identification ID can be set for each operator, and used to manage operation information of individual machines as KOMTRAX data. Data sent from KOMTRAX can be used to analyse operation status by operator as well as by machine.



## Equipment Management Monitoring System (EMMS)

### Monitor Function

Controller monitors engine oil level, coolant temperature, battery charge air clogging, etc. If the controller detects an abnormality, it is displayed on the LCD.



### Maintenance Function

The monitor displays replacement time of oil and filters on the LCD when the replacement interval is reached.



### Trouble Data Memory Function

Monitor stores abnormalities for effective troubleshooting.

PC78UU-10



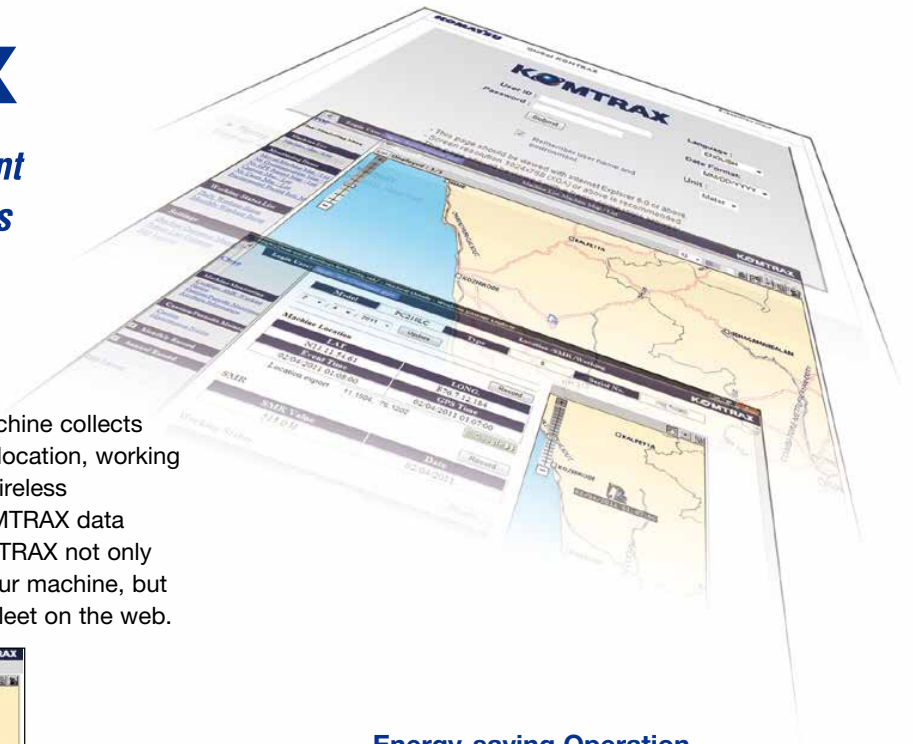
# KOMTRAX

## KOMTRAX

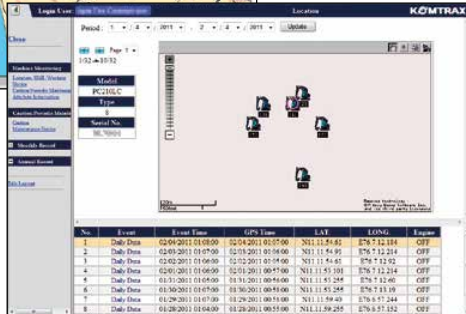
*Assists Customer's Equipment Management and Contributes to Fuel Cost Cutting*

### Equipment Management Support

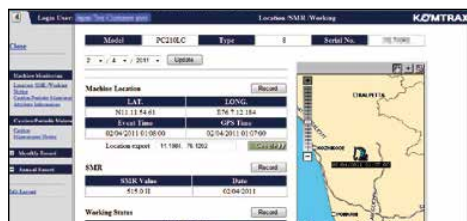
KOMTRAX terminal installed on your machine collects and sends information such as machine location, working record, machine conditions, etc. using wireless communication. You can review the KOMTRAX data remotely via the online application. KOMTRAX not only gives you the power of knowledge on your machine, but also the convenience of managing your fleet on the web.



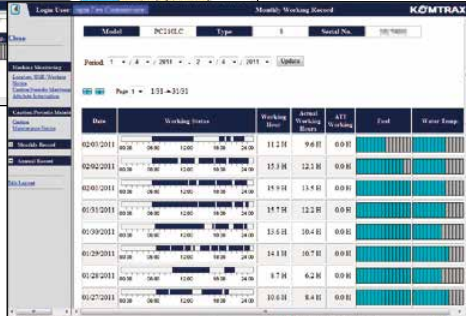
Location



Movement generated position



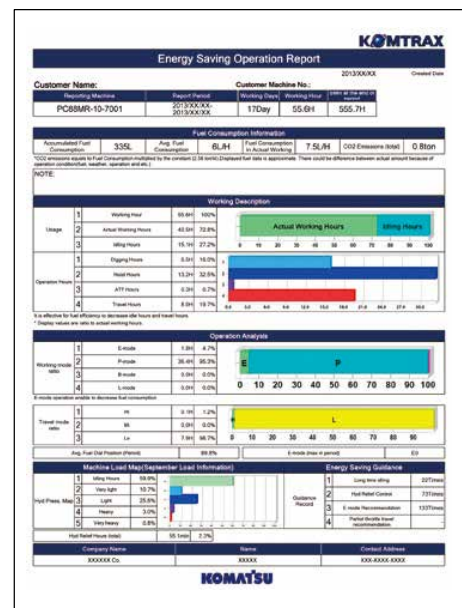
Operation map



Monthly status summary

### Energy-saving Operation Support Report

KOMTRAX can provide various useful information which includes the energy-saving operation support report created based on the operating information of your machine such as fuel consumption and idle time.

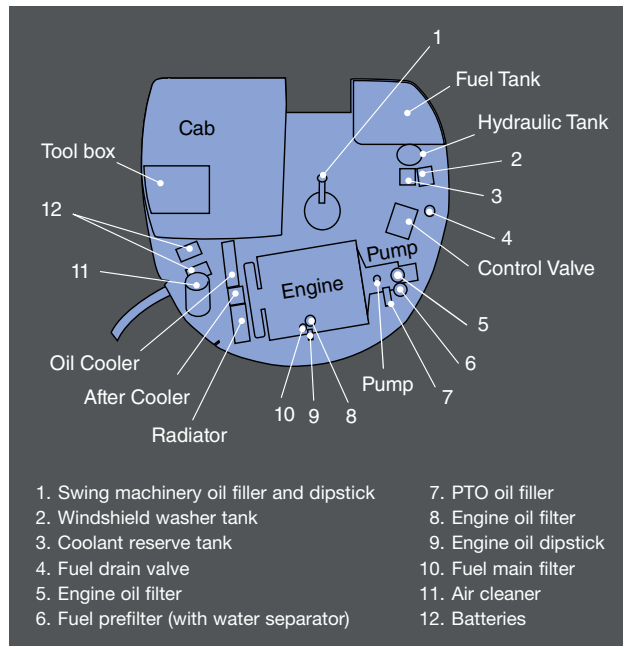




# MAINTENANCE FEATURES

## Optimum Maintenance Layout

With the engine hood, right side hood and side service doors, it is possible to access the major maintenance points from ground level. Furthermore, the fuel drain valve, engine oil filter and swing machinery oil filler are remote mounted, facilitating easy maintenance.



## Easy Access to Engine Oil Filter, Engine Main Fuel Filter and Fuel Drain Valve

Engine oil filter, engine main fuel filter and fuel drain valve are remote mounted to improve accessibility.



Fuel filter

## Equipped with the Fuel Prefilter (with Water Separator)

Removes water and contaminants in the fuel to prevent fuel problems. (with built-in priming pump)



Fuel prefilter with water separator



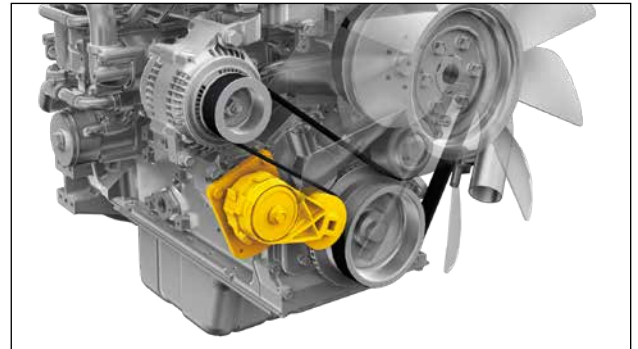
Engine oil filter



Fuel drain valve

## Fan Belt Auto-tensioner

You can service the fan belt easily.



## Battery isolation switch

A standard battery isolation switch allows a technician to disconnect the power supply and lock out before servicing the machine.



## Air Conditioner Filter

The air conditioner filter is removed and installed without the use of tools facilitating filter maintenance.



External air conditioner filter

## Side-by-side Cooling

Since radiator, aftercooler and oil cooler are arranged in parallel, it is easy to clean, remove and install them. Radiator, aftercooler, and oil cooler made of aluminium have high cooling efficiency and are easily recycled.



## Washable Floor

The PC78UU-10's floor is easy to keep clean. The gently inclined surface has a flanged floor mat and drainage holes to facilitate run off.



**Large Tool Box**

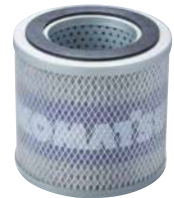
Large tool box provides plenty of space. Grease pump storage space is also provided.



**Long Life Oils, Filters**

High performance filters are used in the hydraulic circuit and engine. By increasing the oil and filter replacement intervals, maintenance costs can be significantly reduced.

|                                |                         |
|--------------------------------|-------------------------|
| Engine oil & Engine oil filter | every <b>500</b> hours  |
| Hydraulic oil                  | every <b>5000</b> hours |
| Hydraulic oil filter           | every <b>1000</b> hours |



Hydraulic oil filter  
(Ecology-white element)



# SPECIFICATIONS



## ENGINE

Model ..... Komatsu SAA4D95LE-6  
 Type ..... Water-cooled, 4-cycle, direct injection  
 Aspiration ..... Turbocharged, aftercooled, cooled EGR  
 Number of cylinders ..... 4  
 Bore ..... **95 mm**  
 Stroke ..... **115 mm**  
 Piston displacement ..... **3.26 ltr**  
 Horsepower:  
 SAE J1995 ..... Gross **50.7 kW** (68.0HP) / 1950 min<sup>-1</sup>  
 ISO 9249 / SAE J1349 ..... Net **48.8 kW** (65.5HP) 1950 min<sup>-1</sup>  
 Governor ..... All-speed control, electronic  
 Fan drive method for radiator cooling ..... Mechanical  
 \*EPA Tier 4 and EU Stage 3B emissions certified



## HYDRAULICS

Type ..... HydrauMind (Hydraulic Mechanical Intelligence New Design) system, closed-center system with load-sensing valves and pressure-compensated valves  
 Main pump:  
 Type ..... Variable displacement, axial piston  
 Maximum flow ..... **160 ltr/min** 42.3 U.S. gal/min  
 Type (for machine with blade) ..... Fixed displacement gear  
 Maximum flow ..... **63 ltr/min** 16.6 U.S. gal/min  
 Hydraulic motors:  
 Travel ..... 2 x piston motor with parking brake  
 Swing ..... 1 x piston motor with swing holding brake  
 Relief valve setting:  
 Implement circuits ..... **26.5 MPa 270 kgf/cm<sup>2</sup>** 3,840 psi  
 Travel circuit ..... **26.5 MPa 270 kgf/cm<sup>2</sup>** 3,840 psi  
 Swing circuit ..... **20.6 MPa 210 kgf/cm<sup>2</sup>** 2,990 psi  
 Blade circuit (Raise) ..... **12.7 MPa 130 kgf/cm<sup>2</sup>** 1,850 psi  
 (Lower) ..... **21.1 MPa 215 kgf/cm<sup>2</sup>** 3,060 psi  
 Hydraulic cylinders:  
 (Number of cylinders – bore x stroke x rod diameter)  
 Boom ..... **1–120 mm x 1015 mm x 70 mm** 4.7" x 40.0" x 2.8"  
 Arm ..... **1–110 mm x 715 mm x 65 mm** 4.3" x 28.1" x 2.6"  
 Bucket ..... **1–90 mm x 710 mm x 55 mm** 3.5" x 28.0" x 2.2"  
 Boom offset ..... **1–110 mm x 350 mm x 55 mm** 4.3" x 13.8" x 2.2"  
 Blade ..... **1–130 mm x 130 mm x 65 mm** 5.1" x 5.1" x 2.6"



## DRIVES AND BRAKES

Steering control ..... Two lever with pedals  
 Drive method ..... Hydrostatic  
 Maximum drawbar pull ..... **66.9 kN 6820 kgf** 15,050 lbf  
 Maximum travel speed (auto shift):  
 High ..... **5.0 km/h** 3.1 mph  
 Low ..... **2.9 km/h** 1.8 mph  
 Service brake ..... Hydraulic lock  
 Parking brake ..... Mechanical disc



## SWING SYSTEM

Driven by ..... Hydraulic motor  
 Swing reduction ..... Planetary gear  
 Swing circle lubrication ..... Grease-bathed  
 Swing lock ..... Mechanical disc brake  
 Swing speed ..... 10 rpm



## UNDERCARRIAGE

Centre frame ..... X-frame  
 Track frame ..... Box-section  
 Seal of track ..... Sealed track  
 Track adjuster ..... Hydraulic  
 Number of shoes (each side) ..... 39  
 Number of carrier rollers (each side) ..... 1  
 Number of track rollers (each side) ..... 5



## COOLANT & LUBRICANT CAPACITY (REFILLING)

Fuel tank ..... **125 ltr** 30 U.S. gal  
 Radiator ..... **10 ltr** 2.6 U.S. gal  
 Engine ..... **11.5 (11.0) ltr** 3.0 (2.9) U.S. gal  
 Final drive, each side ..... **1.1 ltr** 0.3 U.S. gal  
 Swing drive ..... **2.0 ltr** 0.5 U.S. gal  
 Hydraulic tank ..... **102 (56) ltr** 26.9 (14.8) U.S. gal



## OPERATING WEIGHT (APPROXIMATE)

Operating weight includes **3749 mm** 12'4" offset boom, **1720 mm** 5'8" arm, SAE heaped **0.28 m<sup>3</sup>** 0.37 yd<sup>3</sup> backhoe bucket, blade, rated capacity of lubricants, coolant, full fuel tank, operator, and standard equipment.

| Shoes Width        | Operating Weight        | Ground Pressure                              |
|--------------------|-------------------------|--|
| <b>450mm</b> 17.7" | <b>7,960kg</b> 17,550lb | 34.3kPa <b>0.35kg/cm<sup>2</sup></b> 4.98psi |

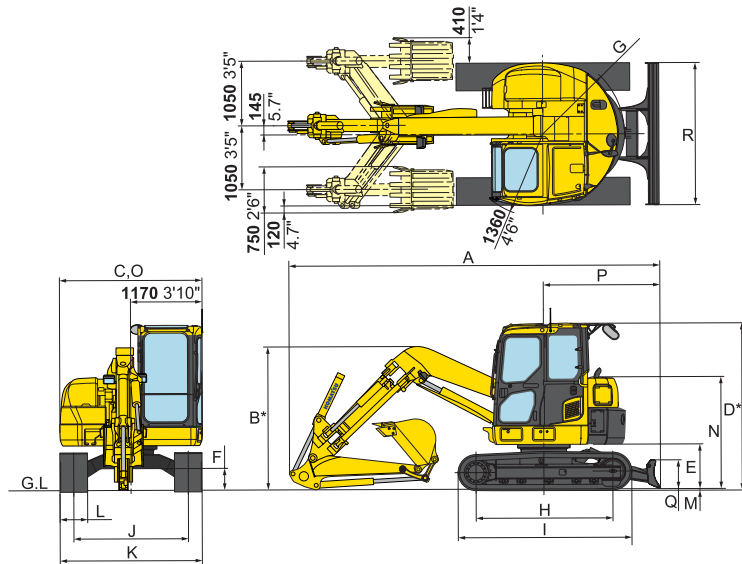




**DIMENSIONS**

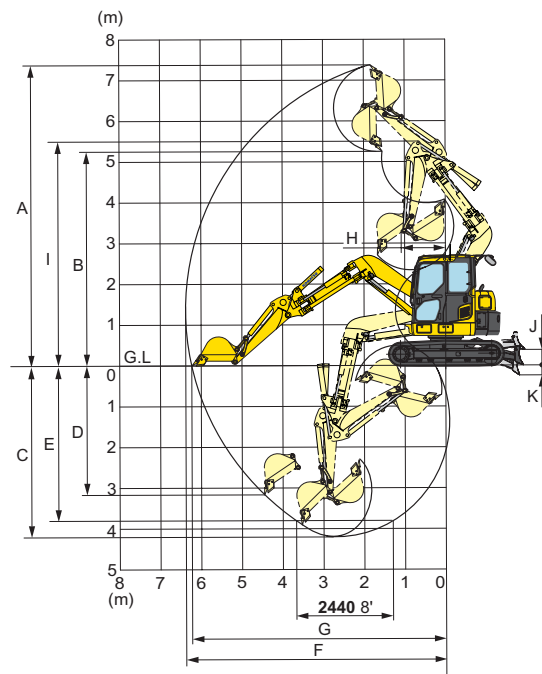
|   | Boom Length                       | 3749 mm | 12'4"  |
|---|-----------------------------------|---------|--------|
|   | Arm Length                        | 1720 mm | 5'8"   |
| A | Overall length                    | 6060 mm | 19'11" |
| B | Overall height (to top of boom)*  | 2325 mm | 8'1"   |
| C | Overall width                     | 2330 mm | 7'8"   |
| D | Overall height (to top of cab)*   | 2730 mm | 25"    |
| E | Ground clearance, counterweight   | 735 mm  | 25"    |
| F | Ground clearance, minimum         | 360 mm  | 12"    |
| G | Tail swing radius                 | 1340 mm | 4'5"   |
| H | Track length on ground            | 2235 mm | 7'4"   |
| I | Track length                      | 2840 mm | 9'4"   |
| J | Track gauge                       | 1870 mm | 6'2"   |
| K | Width of crawler                  | 2320 mm | 7'7"   |
| L | Shoe width                        | 450 mm  | 17'7"  |
| M | Grouser height                    | 20 mm   | 0'8"   |
| N | Machine cab height                | 1835 mm | 6'0"   |
| O | Machine cab width                 | 2330 mm | 7'8"   |
| P | Distance swing centre to rear end | 1915 mm | 6'3"   |
| Q | Blade height                      | 470 mm  | 1'7"   |
| R | Blade width                       | 2320 mm | 7'7"   |

\*: including grouser height



**WORKING RANGE**

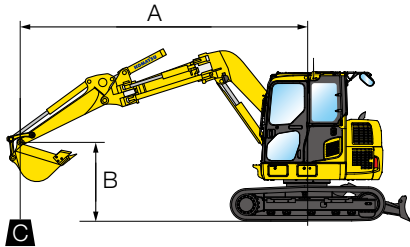
|     | Boom Length                                       | 3749 mm             | 12'4"  |
|-----|---|---------------------|--------|
|     | Arm Length  | 1720 mm             | 5'8"   |
| A   | Maximum digging height                            | 7330 mm             | 24'1"  |
| B   | Maximum dumping height                            | 5260 mm             | 17'3"  |
| C   | Maximum digging depth                             | 4230 mm             | 13'10" |
| D   | Maximum vertical wall digging depth               | 3190 mm             | 10'6"  |
| E   | Maximum digging depth of cut for 2440 mm 8' level | 3795 mm             | 12'5"  |
| F   | Maximum digging reach                             | 6400 mm             | 21'0"  |
| G   | Maximum digging reach at ground                   | 6240 mm             | 20'6"  |
| H   | Minimum swing radius                              | 1200 mm             | 3'11"  |
| I   | Maximum height of min. swing radius               | 5460 mm             | 17'11" |
| J   | Maximum lift above ground (blade)                 | 380 mm              | 1'3"   |
| K   | Maximum drop below ground (blade)                 | 245 mm              | 9'6"   |
| ISO | Bucket digging force                              | 61.3 kN             |        |
|     |   | 6250 kgf 13,780 lbf |        |
|     | Arm crowd force                                   | 38.8 kN             |        |
|     |   | 3960 kgf 8,730 lbf  |        |



**BACKHOE BUCKET AND ARM COMBINATION**

| Bucket Capacity (heaped) |                  | Width                |                   | Weight        | Number of Teeth | Arm Length<br>1720 mm 5'8" |
|--------------------------|------------------|----------------------|-------------------|---------------|-----------------|----------------------------|
| AE, PCSA                 | CECE             | Without Side Cutters | With Side Cutters |               |                 |                            |
| 0.09 m³ 0.12 yd³         | 0.08 m³ 0.10 yd³ | 350 mm 14"           | 450 mm 18"        | 145 kg 320 lb | 3               | ○                          |
| 0.12 m³ 0.16 yd³         | 0.11 m³ 0.14 yd³ | 450 mm 18"           | 550 mm 22"        | 160 kg 355 lb | 3               | ○                          |
| 0.20 m³ 0.26 yd³         | 0.18 m³ 0.24 yd³ | 550 mm 22"           | 650 mm 26"        | 185 kg 410 lb | 3               | ○                          |
| 0.28 m³ 0.37 yd³         | 0.25 m³ 0.33 yd³ | 650 mm 26"           | 750 mm 30"        | 210 kg 465 lb | 4               | ○                          |

# LIFT CAPACITIES



- A: Reach from swing centre
- B: Bucket hook height
- C: Lifting capacity
- Cf: Rating over front
- Cs: Rating over side
- ☉: Rating at maximum reach

## CONDITION:

- Bucket: **0.28 m<sup>3</sup>** 0.37 yd<sup>3</sup> SAE heaped
- Arm length: **1720 mm** 5'8"
- Shoe width: **450 mm** 17'7" triple grouser
- Blade above ground

|        |   | ☉ MAX |      | 4.5 m |      | 3.0 m |       | 1.5 m |       |
|--------|---|-------|------|-------|------|-------|-------|-------|-------|
| B      | A | Cf    | Cs   | Cf    | Cs   | Cf    | Cs    | Cf    | Cs    |
| 5.0 m  |   | *1610 | 1590 |       |      | *2440 | *2440 |       |       |
| 3.0 m  |   | 1090  | 880  | 1450  | 1180 | *3020 | 2470  | *5220 | *5220 |
| 0.0 m  |   | 900   | 710  | 1190  | 940  | 2320  | 1780  |       |       |
| -2.0 m |   | 1240  | 970  | 1180  | 930  | 2310  | 1770  | *4220 | *4220 |

Unit: kg

## CONDITION:

- Bucket: **0.28 m<sup>3</sup>** 0.37 yd<sup>3</sup> SAE heaped
- Arm length: **1720 mm** 5'8"
- Shoe width: **450 mm** 17'7" triple grouser
- Blade on ground

|        |   | ☉ MAX |      | 4.5 m |      | 3.0 m |       | 1.5 m |       |
|--------|---|-------|------|-------|------|-------|-------|-------|-------|
| B      | A | Cf    | Cs   | Cf    | Cs   | Cf    | Cs    | Cf    | Cs    |
| 5.0 m  |   | *1610 | 1590 |       |      | *2440 | *2440 |       |       |
| 3.0 m  |   | *1580 | 880  | *2270 | 1180 | *3020 | 2470  | *5220 | *5220 |
| 0.0 m  |   | *2090 | 710  | *2570 | 940  | *4040 | 1780  |       |       |
| -2.0 m |   | *1970 | 970  | *1780 | 930  | *3090 | 1770  | *4220 | *4220 |

Unit: kg

\*Load is limited by hydraulic capacity rather than tipping. Ratings are based on SAE Standard No. J1097. Rated loads do not exceed 87% of hydraulic lift capacity or 75% of tipping load.



## STANDARD EQUIPMENT

- Air cleaner, double element with auto dust evacuator
- Alternator, 35 Ampere, 24 V
- Arm,
  - **1720mm** 5'8" arm assembly
- Automatic air conditioner
- Auto deceleration
- Batteries, 55 Ah/2 x 12 V
- Blade,
  - **2320mm** 7'7" blade assembly

- Boom,
  - **3749mm** 12'4" boom assembly
- Bolt-on top guard,
  - [ Operator Protective Guards level 2 ]
- Cab which includes: floor mat, intermittent front windshield wiper and washer, large ceiling window, sunshade, pull-up front window, removable lower windshield
- Cooling fan, suction type
- Counterweight, 800 kg
- KOMTRAX

- Monitor panel
- Rear view mirrors (left side rear, rear)
- Rear view monitoring system
- Seat belt **78mm** 3"
- Shoes,
  - **450mm** 17'7" Triple grouser
- Starting motor 4.5 kW
- Suspension seat
- Travel alarm
- Working lights
  - 2 on boom



## OPTIONAL EQUIPMENT

- 12 V electric plug
- Heavy counterweight, 1150 kg

- Hydraulic control unit
  - 1 additional actuator

- Shoes,
  - **450mm** 17'7" Road Liner

www.Komatsu.com.au

Printed in Australia

# KOMATSU®